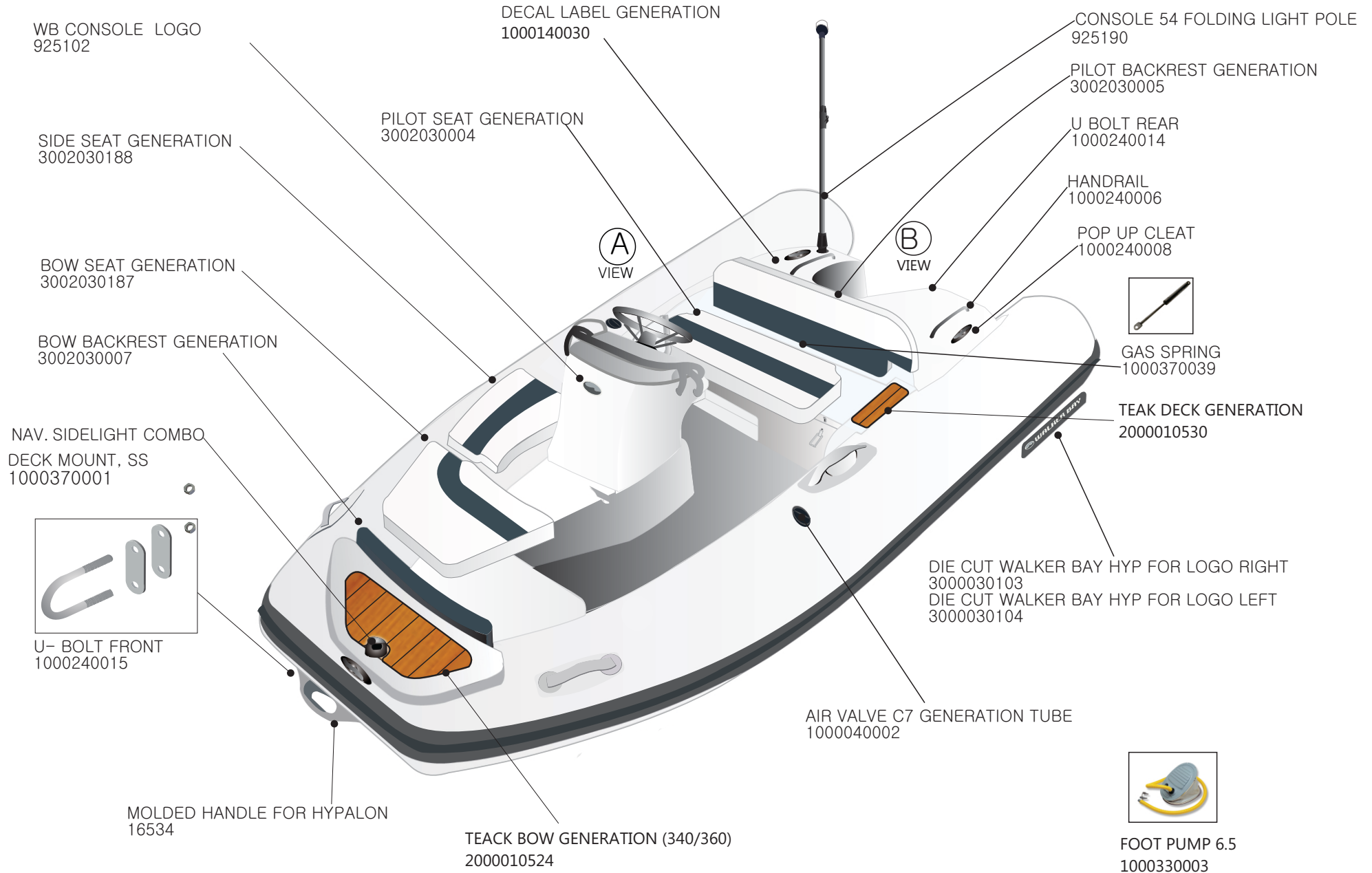


# GENERATION 340

*Generation*



WALKER BAY



Components subject to change without notice.

# GENERATION 340



WALKER BAY

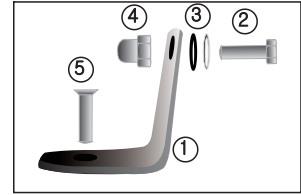
## CONSOLE

WINDSCREEN GENERATION  
1000070097



OUTLET 12V  
1000370003

CONSOLE HANDRAIL GENERATION  
1000240063



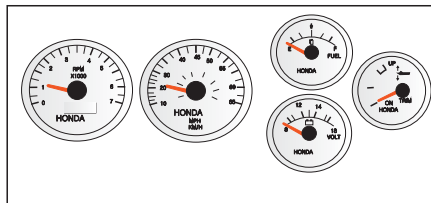
- ① WINDSCREEN SUPPORT SET (2) 90 AND 2 (80)  
1000240021
- ② SELF TAPPING SCREW BHP DRIVE  
4mm X 13mm  
1000210033
- ③ WASHER #12 NEOFLAT (9 RID ASSY)  
1000210046/11076
- ④ NUT A4-SS M5  
1000210039
- ⑤ BUTTON HEAD PHILIPS DRIVE BOLT 5MM X 19MM  
1000210025

- ① LIGHT SWITCH  
1000370007
- BILGE PUM SWITCH  
1000370006
- ANCHOR LIGH SWITCH  
1000370030
- TOGGLES WITHOUT SYMBOL (NEUTRAL)  
1000370027

- ② CARLING SWITCH CONTURA II ON-OFF  
1000370005
- CARLING SWITCH CONTURA II ON-OFF-ON  
1000370028

- ③ TERMINAL INSERT  
1000370008

STEERING WHEEL 12"  
1000240051



HONDA GAUGE SET  
1000057004

KEY PNL/PGMFI KT, 20'  
4000010028

RUBBER CLOSING SYSTEM  
1000070044

PLASTIC VENT CAP  
1000070020

Components subject to change without notice.

# GENERATION 340

## DECK

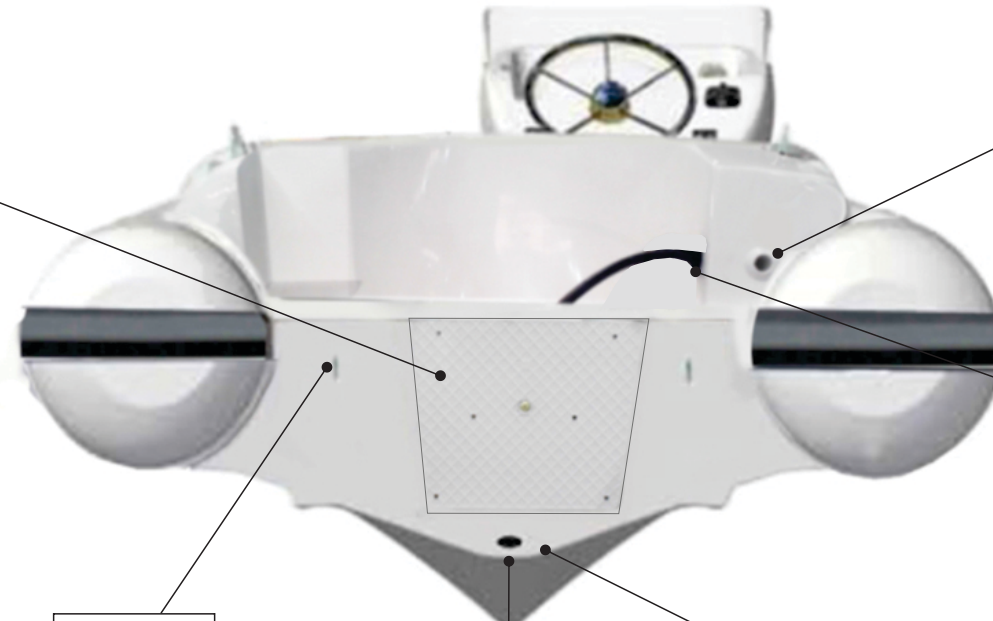


**B**  
VIEW

Transom motor pad  
100070049



Thru hull 90 degrees  
100070022



Motor well boot 4" diameter  
100070019



U-BOLT REAR  
1000240014

STAINLESS STEEL DRAIN PLUG  
1000240029

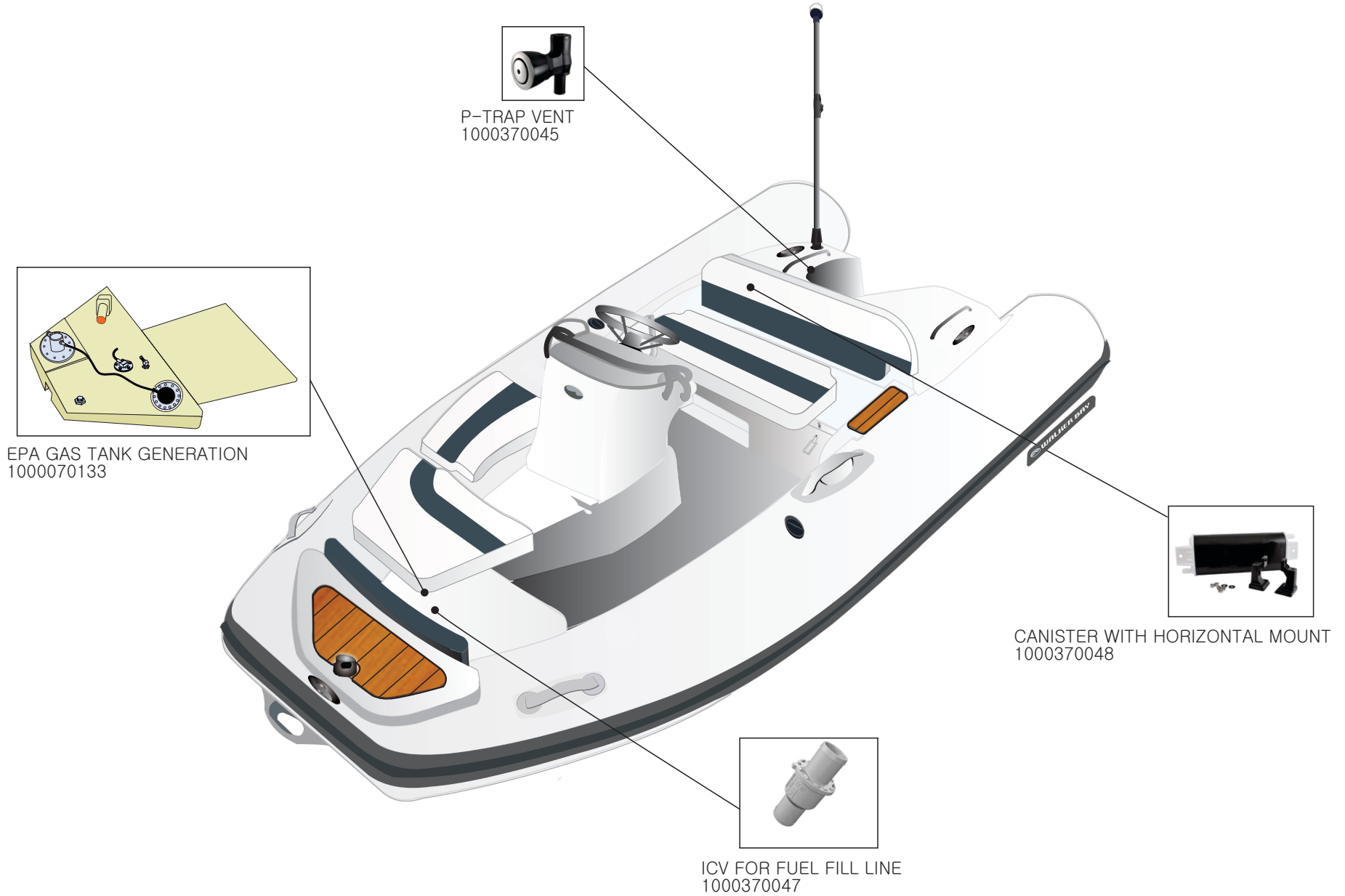


BILGE PUMP  
1000370010

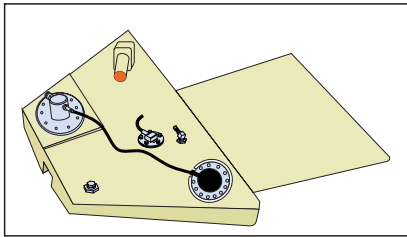
Components subject to change without notice.

# GENERATION 340

# FUEL SYSTEM EPA



P-TRAP VENT  
1000370045



EPA GAS TANK GENERATION  
1000070133



CANISTER WITH HORIZONTAL MOUNT  
1000370048



ICV FOR FUEL FILL LINE  
1000370047

Components subject to change without notice.